

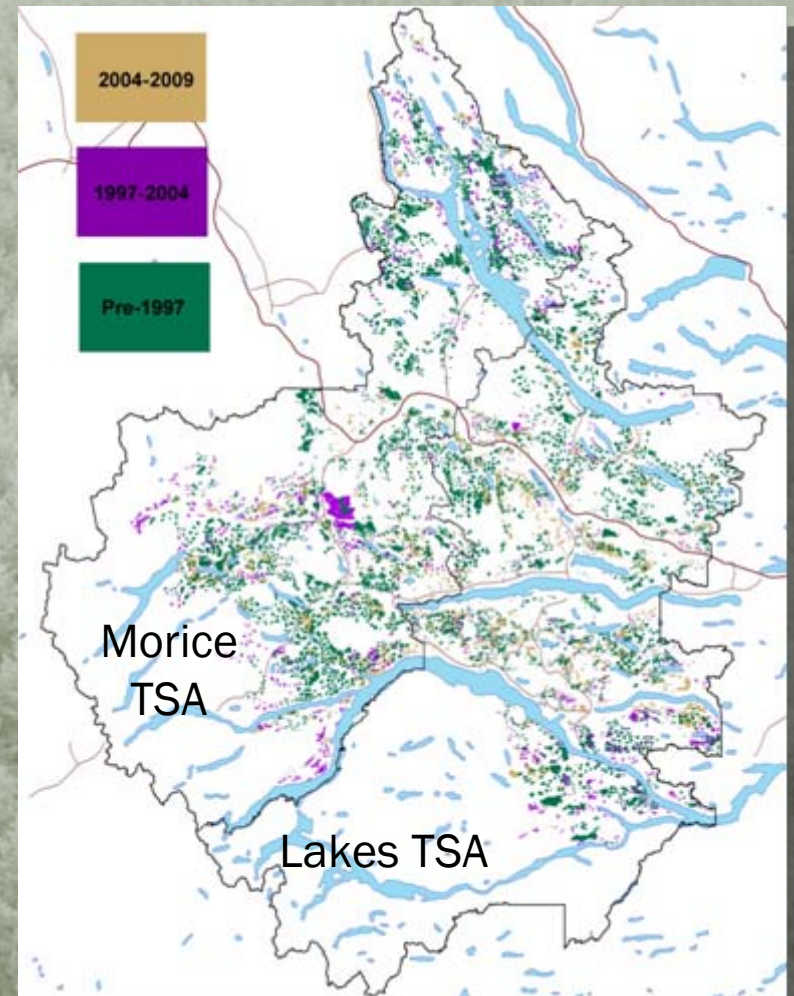


Nadina Forest District

# **FOREST MANAGEMENT OBJECTIVES AND STRATEGIES OVERVIEW**

# THE NADINA FOREST DISTRICT

- × 3 million hectares
  - + 1.2 million hectares  
Timber Harvesting Land  
Base
    - × 524,000 hectares (Lakes)
    - × 669,000 hectares  
(Morice)
- × 5.3 million m<sup>3</sup> AAC
  - × 3.1 million m<sup>3</sup> (Lakes)
  - × 2.2 million m<sup>3</sup> (Morice)
- × Harvest Levels (04-09)
  - + 4.6 million m<sup>3</sup>/yr



# VALUES, OBJECTIVES & STRATEGIES

- × Objectives and Strategies:
  - + Lakes District LRMP
  - + Morice LRMP
  - + Lakes North SRMP
  - + Lakes South SRMP
  - + FRPA & FPPR
  - + Lakes SFMP (IFPA)
  - + Morice SFMP (IFPA)
  - + Mid-Term Timber Supply Strategy
  - + Mid-Term Silviculture Strategy
  - + Other (policies, BMPs)
- × (Some) Forest Values
  - + Timber
  - + Biodiversity
  - + Wildlife

# TIMBER

- × Maintain or enhance an economically valuable supply of commercial timber
- × Strategies
  - + Mid-Term Timber Supply Strategy
    - × Harvest minimum 75% pine
    - × Protect suitable secondary structure
    - × Monitoring and reporting
  - + Silviculture Strategy
    - × Fertilization of suitable spruce and pine
    - × Assisted species migration and planting trials (e.g. Fd, Lw)
    - × More species diversity (e.g. less pine!)
  - + Forest Health
    - × Increased PI planting density, increased diversity, decreased OAF2 (Rust)
    - × Detection, monitoring, sanitation treatments, harvest priority (bark beetles)

# BIODIVERSITY

## ✘ Current Land Use Objectives

### + Lakes TSA

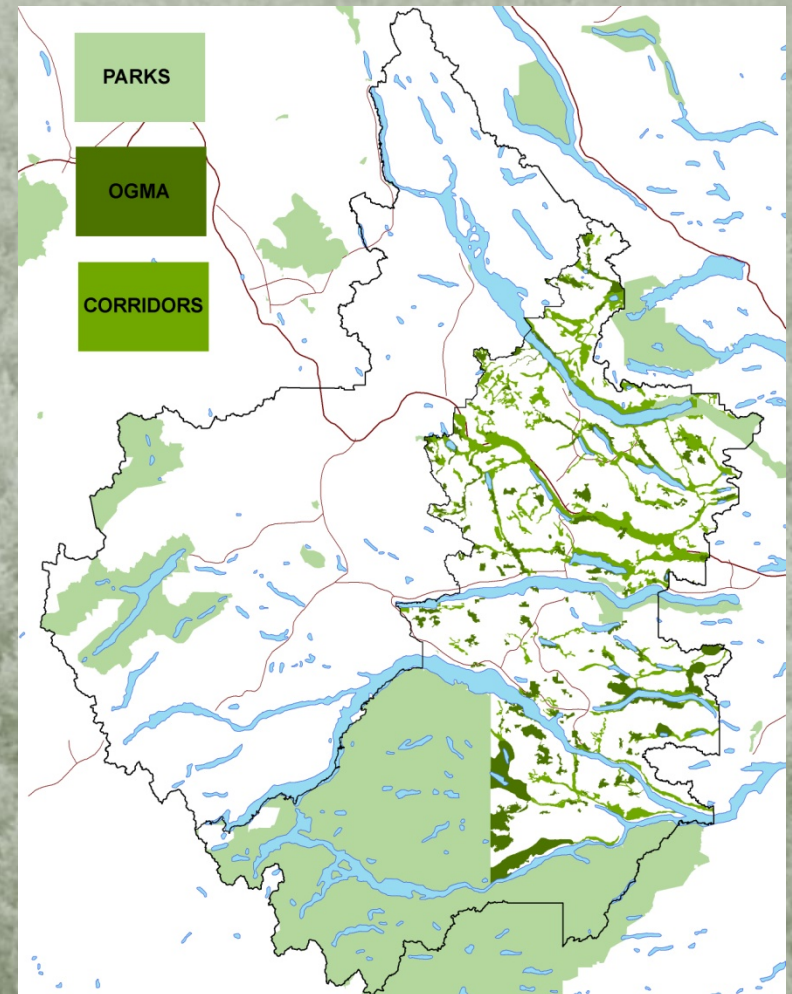
- ✘ Spatial OGMAs
- ✘ Seral Stage Distribution Targets
- ✘ Connectivity Objectives
- ✘ WTR Retention Targets

### + Morice TSA

- ✘ Old Growth Conservation Targets

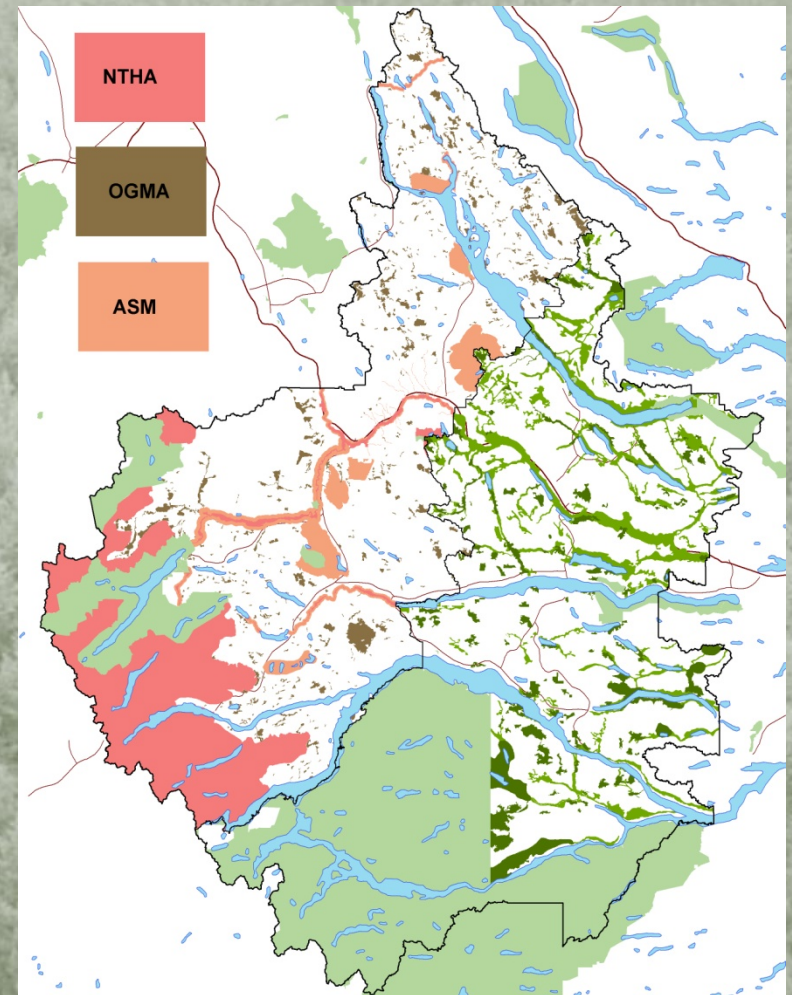
## ✘ FPPR Requirements

- + Riparian Management (Lakes and Morice)
- + Landscape and Stand-Level Targets/Requirements (Lakes or Morice)



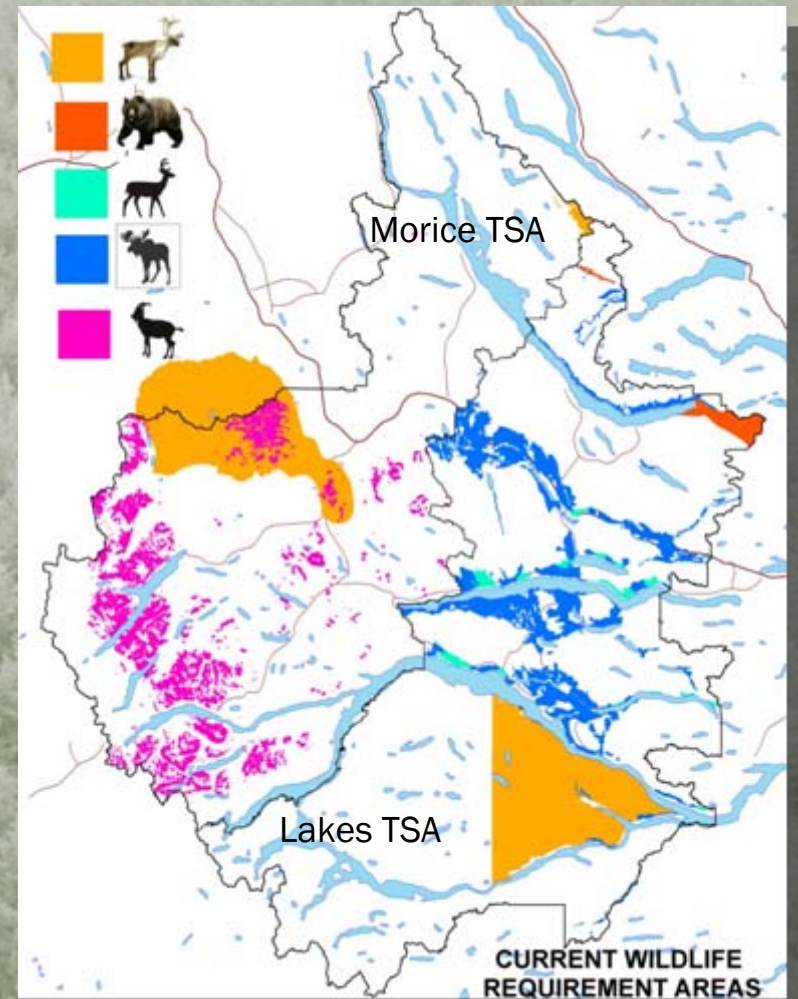
# BIODIVERSITY

- ✦ Upcoming Land Use Objectives: Morice TSA
  - + Spatial OGMA
  - + Seral Stage Distribution Targets
  - + WTR Retention Targets
  - + Designation of No Timber Harvesting Areas and Area Specific Management



# CURRENT WILDLIFE REQUIREMENTS

- ✘ Forest Cover Requirements/Habitat Indicators
  - + Deer, Moose, Grizzly, and Caribou (Tweedsmuir) in the Lakes
  - + Goats and Caribou (Tweedsmuir, Telkwa, Takla) in the Morice
- ✘ Designated Wildlife Habitat Areas
  - + Bull Trout (Morice)



# ANTICIPATED WILDLIFE DESIGNATIONS

- × Anticipated Designations (WHA, UWR, GWM)
  - + Goats (Morice and Lakes)
  - + Takla Caribou (Lakes)
  - + Telkwa Caribou (Morice)

